

6

5

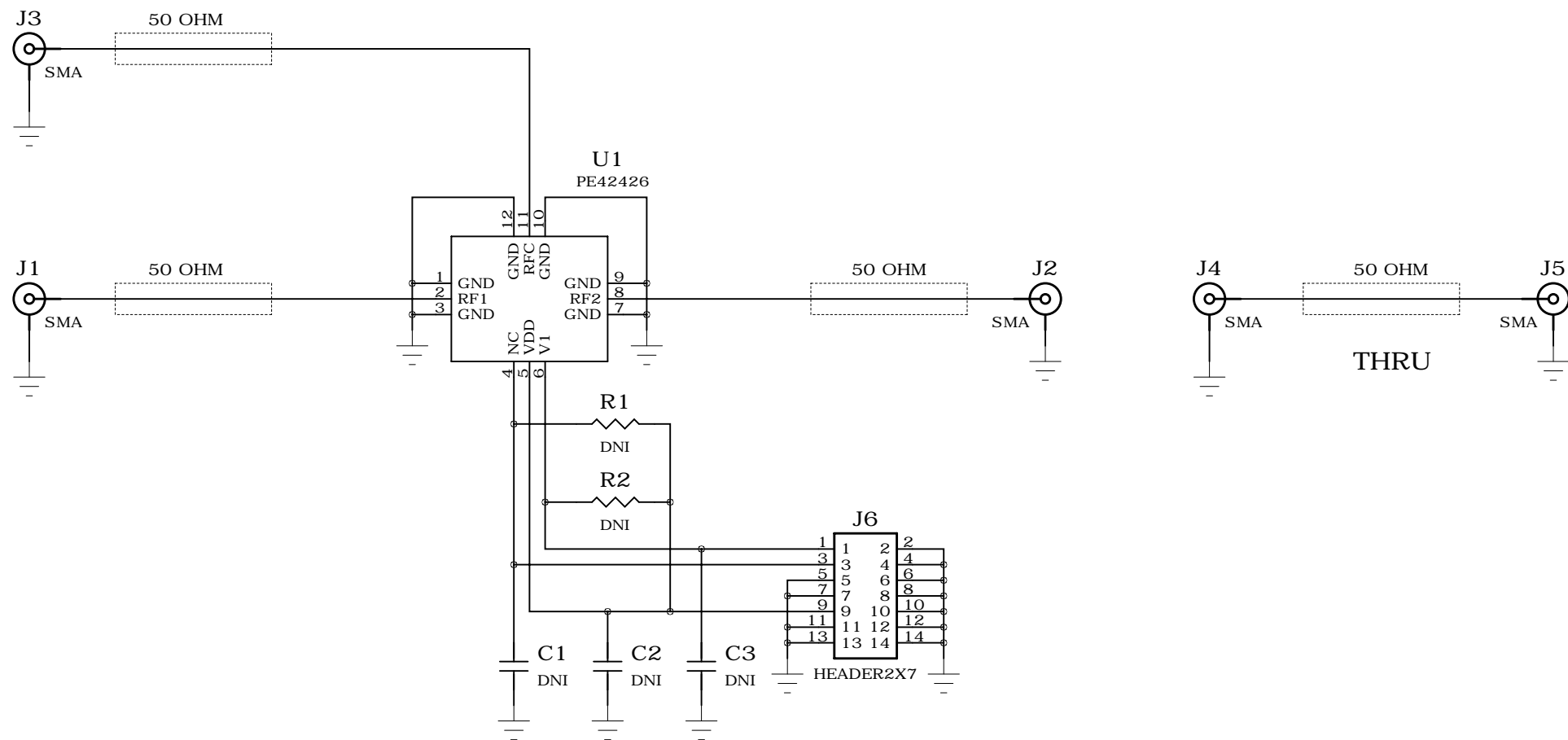
4

3

2

1

REVISION RECORD			
LTR	ECO NO:	APPROVED:	DATE:



NOTES:

- 1. CAUTION:
CONTAINS PARTS AND ASSEMBLIES SUSCEPTIBLE
TO DAMAGE BY ELECTROSTATIC DISCHARGE (ESD)

PEREGRINE SEMICONDUCTOR
9380 Carroll Park Drive
San Diego, CA 92121

TITLE:
SCHEMATIC, PE42426 EVK

DRAWN: R. PROAL	DATED: 09-15-16	SIZE: B	DRAWING NO: DOC-79270
CHECKED: E. SHAPIRO	DATED: 09-15-16	REV: 01	SHEET: 1 OF 1
QUALITY CONTROL:	DATED:		
RELEASED:	DATED:	SCALE: NONE	

DRAWN: R. PROAL	DATED: 09-15-16
CHECKED: E. SHAPIRO	DATED: 09-15-16
QUALITY CONTROL:	DATED:
RELEASED:	DATED:

D

C

B

A

D

C

B

A

Item	Qty	Reference	Description	Value	Manufacturer	Manufacturer Part Number	Distributor	Distributor Part Number	Notes
1	5	J1-5	CONN SMA JACK 50 OHM EDGE MNT	SMA	Cinch Johnson	142-0701-881	Digi-Key	J657-ND	For use with .031 PCB
2	3	C1-3	CAP 0603 DNI	DNI					DNI
3	1	J6	CONN HEADER .100 DUAL STR 72POS		Sullins Connector Solutions	PZC36DABN	Digi-Key	S2021-36-ND	CUT TO FIT 2X7
4	1	U1	IC, PE42426		Peregrine Semiconductor	PE42426			
5	2	R1-2	RES 0603 DNI	DNI					DNI
6	1		PCB, 3X3 12L 50 OHM EVK		Peregrine Semiconductor	PRT-60922-01			